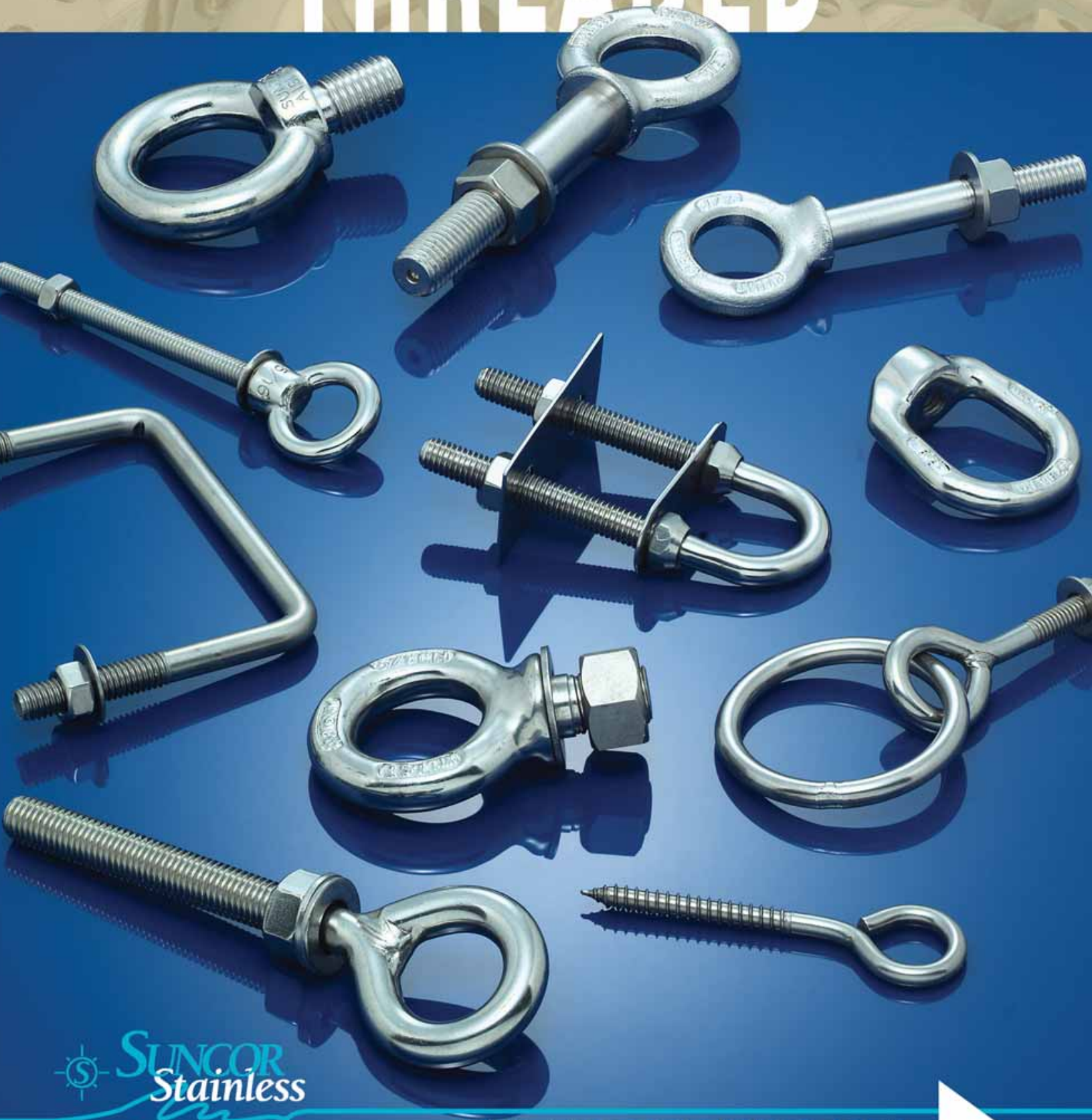


SUNCOR STAINLESS, INC.

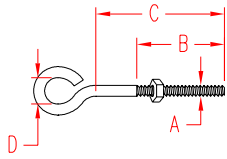
THREADED



THREADED PRODUCTS

UNWELDED EYE BOLT

304 STAINLESS STEEL



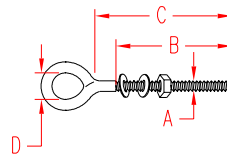
NOTE:
ALL THREADS ARE STANDARD "UNC".
ONE NUT IS INCLUDED. EXTRA NUTS AND WASHERS
ARE AVAILABLE FROM STOCK.

* CUSTOM SIZES ARE AVAILABLE. PLEASE CALL OR
SEND US YOUR SPECIFICATIONS.

ITEM	A	B	C	D	THREAD	WIRE DIA.	WLL
	(size)						(lb)
S0310-05025	3/16"	0.88"	1"	0.38"	10-24	0.16	100
S0310-05050	3/16"	1.00"	2"	0.38"	10-24	0.16	100
S0310-05075	3/16"	1.50"	3"	0.38"	10-24	0.16	100
S0310-07025	1/4"	0.88"	1"	0.50"	1/4"-20	0.21	200
S0310-07050	1/4"	1.25"	2"	0.50"	1/4"-20	0.21	200
S0310-07075	1/4"	1.50"	3"	0.50"	1/4"-20	0.21	200
S0310-07100	1/4"	2.50"	4"	0.50"	1/4"-20	0.21	200
S0310-07125	1/4"	3.00"	5"	0.50"	1/4"-20	0.21	200
S0310-07150	1/4"	4.00"	6"	0.50"	1/4"-20	0.21	200
S0310-08025	5/16"	0.88"	1"	0.63"	5/16"-18	0.27	350
S0310-08050	5/16"	1.25"	2"	0.63"	5/16"-18	0.27	350
S0310-08075	5/16"	1.50"	3"	0.63"	5/16"-18	0.27	350
S0310-08100	5/16"	2.50"	4"	0.63"	5/16"-18	0.27	350
S0310-10025	3/8"	0.88"	1"	0.75"	3/8"-16	0.33	500
S0310-10050	3/8"	1.25"	2"	0.75"	3/8"-16	0.33	500
S0310-10075	3/8"	1.50"	3"	0.75"	3/8"-16	0.33	500
S0310-10100	3/8"	2.50"	4"	0.75"	3/8"-16	0.33	500
S0310-10125	3/8"	3.00"	5"	0.75"	3/8"-16	0.33	500
S0310-10150	3/8"	4.00"	6"	0.75"	3/8"-16	0.33	500
S0310-13050	1/2"	1.50"	2"	1.00"	1/2"-13	0.43	1,000
S0310-13100	1/2"	2.50"	4"	1.00"	1/2"-13	0.43	1,000
S0310-13150	1/2"	4.00"	6"	1.00"	1/2"-13	0.43	1,000

WELDED EYE BOLT

304 STAINLESS STEEL



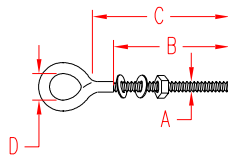
NOTE:
ALL THREADS ARE STANDARD "UNC". ONE NUT AND
TWO WASHERS ARE INCLUDED. EXTRA NUTS AND
WASHERS ARE AVAILABLE FROM STOCK.

* CUSTOM SIZES ARE AVAILABLE. PLEASE CALL OR
SEND US YOUR SPECIFICATIONS.

ITEM	A	B	C	D	THREAD	WIRE DIA.	WLL
	(size)						(lb)
S0312-05025	3/16"	0.85"	1"	0.37"	10-24	0.16	250
S0312-05050	3/16"	1.50"	2"	0.37"	10-24	0.16	250
S0312-05075	3/16"	1.75"	3"	0.37"	10-24	0.16	250
S0312-07050	1/4"	1.50"	2"	0.50"	1/4"-20	0.21	400
S0312-07075	1/4"	2.00"	3"	0.50"	1/4"-20	0.21	400
S0312-07100	1/4"	2.00"	4"	0.50"	1/4"-20	0.21	400
S0312-07125	1/4"	2.00"	5"	0.50"	1/4"-20	0.21	400
S0312-07150	1/4"	2.00"	6"	0.50"	1/4"-20	0.21	400
S0312-08050	5/16"	1.25"	2"	0.63"	5/16"-18	0.27	600
S0312-08075	5/16"	2.00"	3"	0.63"	5/16"-18	0.27	600
S0312-08100	5/16"	2.00"	4"	0.63"	5/16"-18	0.27	600
S0312-08125	5/16"	2.00"	5"	0.63"	5/16"-18	0.27	600
S0312-08150	5/16"	2.00"	6"	0.63"	5/16"-18	0.27	600
S0312-10075	3/8"	2.00"	3"	0.75"	3/8"-16	0.33	1,000
S0312-10100	3/8"	2.00"	4"	0.75"	3/8"-16	0.33	1,000
S0312-10125	3/8"	2.00"	5"	0.75"	3/8"-16	0.33	1,000
S0312-10150	3/8"	2.00"	6"	0.75"	3/8"-16	0.33	1,000
S0312-13075	1/2"	2.00"	3"	1.00"	1/2"-13	0.43	1,800
S0312-13100	1/2"	2.00"	4"	1.00"	1/2"-13	0.43	1,800
S0312-13125	1/2"	2.00"	5"	1.00"	1/2"-13	0.43	1,800
S0312-13150	1/2"	2.00"	6"	1.00"	1/2"-13	0.43	1,800

METRIC WELDED EYE BOLT

304 STAINLESS STEEL



ITEM	A	B	C	D	WIRE DIA.	WLL
	(size)					(lb)
S0313-0560	5 mm	2.00"	2.25"	0.38"	0.17	250
S0313-0580	5 mm	3.12"	3.25"	0.38"	0.17	250
S0313-0640	6 mm	1.25"	1.50"	0.50"	0.21	400
S0313-0660	6 mm	2.00"	2.25"	0.50"	0.21	400
S0313-0680	6 mm	3.12"	3.25"	0.50"	0.21	400
S0313-0810	8 mm	3.50"	4.00"	0.63"	0.28	600
S0313-0880	8 mm	3.00"	3.25"	0.63"	0.28	600
S0313-1010	10 mm	3.50"	4.00"	0.88"	0.36	1,000
S0313-1015	10 mm	5.50"	6.00"	0.88"	0.36	1,000
S0313-1210	12 mm	3.50"	4.00"	1.00"	0.42	1,800
S0313-1215	12 mm	4.00"	6.00"	1.00"	0.42	1,800

NOTE:
ALL THREADS ARE METRIC. ONE NUT AND TWO WASHERS ARE
INCLUDED.
EXTRA NUTS AND WASHERS ARE AVAILABLE FROM STOCK.



Key:



Made in USA



Drop Forged



Precision Machined



Wire Formed



Suncor Exclusive



Import



Precision Cast



Stamped



Load Rated



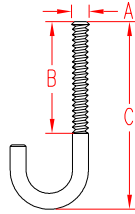
New Product

ORDERS ONLY: 800-394-2222 (USA)
877-495-5510 (CANADA)

All logos, icons, images, measurements and descriptions are the sole property of Suncor Stainless, Inc.
© 2002 Suncor Stainless, Inc.

J-BOLTS

304 STAINLESS STEEL

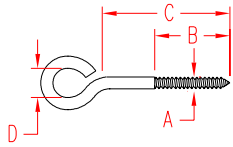


ITEM	A	B	C	WT
S0358-0550	3/16"	1.25"	1.88"	(lb) 0.03
S0358-0655	7/32"	1.25"	2.13"	0.04
S0358-0760	1/4"	1.50"	2.31"	0.05
S0358-0875	5/16"	2.00"	3.00"	0.08
S0358-10100	3/8"	2.25"	3.75"	0.12
S0358-10125	3/8"	2.25"	5.00"	0.16
S0358-10180	3/8"	2.25"	7.00"	0.22
S0358-13150	1/2"	3.00"	6.00"	0.26

NOTE:
ALL THREADS ARE STANDARD "UNC".
FOR S0303-SERIES "UNC" RIGHT HAND NUTS, SEE PAGE 75.

LAG EYE SCREW

304 STAINLESS STEEL

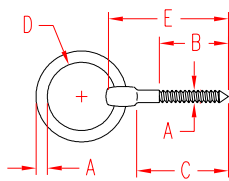


ITEM	A	B	C	D	WIRE DIA.	WT
S0327-04025	(size) 5/32"	0.63"	0.75"	0.44"	0.16	(lb) 0.01
S0327-07032	1/4"	0.75"	1.25"	0.63"	0.23	0.03
S0327-07065	1/4"	1.87"	2.50"	0.58"	0.23	0.03
S0327-07075	1/4"	1.87"	3.00"	0.50"	0.23	0.03
S0327-07100	1/4"	1.87"	4.00"	0.50"	0.26	0.04
S0327-08032	5/16"	0.75"	1.25"	0.63"	0.26	0.05
S0327-08065	5/16"	1.25"	2.50"	0.63"	0.26	0.06
S0327-08075	5/16"	1.75"	3.00"	0.63"	0.26	0.07
S0327-08100	5/16"	1.75"	4.00"	0.63"	0.26	0.08
S0327-08125	5/16"	1.75"	5.00"	0.63"	0.26	0.10
S0327-10065	3/8"	1.75"	2.50"	0.75"	0.32	0.10

NOTE:
SEE NOTE ON LAG RING BOLT S0329 BELOW

LAG RING BOLT

304 STAINLESS STEEL

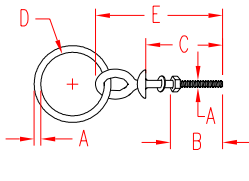


ITEM	A	B	C	D	E	WT
S0329-0007	(size) 1/4"	1.50"	2.25"	1.20"	2.75"	(lb) 0.12
S0329-0008	5/16"	1.50"	2.25"	2.00"	3.00"	0.22
S0329-0010	3/8"	2.13"	3.13"	2.40"	3.86"	0.41
S0329-0013	1/2"	3.25"	4.75"	2.94"	5.65"	0.76

NOTE:
WOOD TYPE THREADS. THE WORKING LOAD HAS NOT BEEN ESTABLISHED SINCE IT DEPENDS ON THE WOOD, HOLE AND INSTALLATION.

RING BOLT SHOULDER

316 STAINLESS STEEL

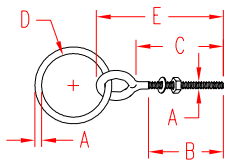


ITEM	A	B	C	D	E	WLL	WT
S0330-0750	(size) 1/4"	1.50"	2.00"	1.75"	2.94"	(lb) 250	(lb) 0.14
S0330-0855	5/16"	1.50"	2.25"	2.00"	3.50"	400	0.27
S0330-1012	3/8"	2.50"	4.25"	2.50"	6.00"	600	0.54
S0330-1065	3/8"	1.50"	2.50"	2.50"	4.00"	600	0.48
S0330-1315	1/2"	3.00"	6.00"	3.00"	7.75"	1,100	1.17
S0330-1380	1/2"	1.50"	3.25"	3.00"	5.20"	1,100	1.06
S0330-1615	5/8"	3.00"	6.00"	3.00"	8.50"	2,000	1.95
S0330-2015	3/4"	3.00"	6.00"	3.00"	8.87"	2,600	2.89

NOTE:
DROP FORGED EYE BOLT WITH WELDED RING; ALL THREADS ARE STANDARD "UNC"; ONE NUT AND ONE WASHER ARE INCLUDED.

RING BOLT PLAIN

316 STAINLESS STEEL



ITEM	A	B	C	D	E	WLL	WT
S0331-0750	(size) 1/4"	1.50	2.00"	1.75"	2.94"	(lb) 250	(lb) 0.12
S0331-0855	5/16"	1.50	2.25"	2.00"	3.50"	400	0.21
S0331-1012	3/8"	2.50	4.25"	2.50"	5.75"	600	0.38
S0331-1065	3/8"	1.50	2.50"	2.50"	4.25"	600	0.42
S0331-1315	1/2"	3.00	6.00"	3.00"	8.00"	1,100	0.94
S0331-1380	1/2"	1.50	3.25"	3.00"	5.25"	1,100	0.83

NOTE:
WELDED EYE BOLT WITH WELDED RING; ALL THREADS ARE STANDARD "UNC"; ONE NUT AND ONE WASHER ARE INCLUDED.
12 MM AVAILABLE IN 4" OR 6". USE ITEM# 0328-1210 AND 0328-1215.

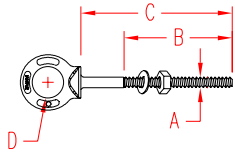


TEL 508-732-9191 • FAX 508-732-9798 • ORDERS ONLY 800-394-2222

www.suncorstainless.com

THREADED PRODUCTS

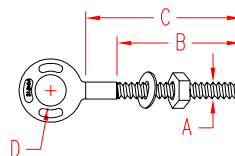
SHOULDER EYE BOLT 316-NM STAINLESS STEEL



NOTE:
EYE BOLTS HAVE FORGED MARKINGS OF 316-NM, SIZE AND WLL IN TONS. ALL THREADS ARE "UNC". ONE NUT AND WASHER ARE INCLUDED. EXTRA NUTS AND WASHERS ARE AVAILABLE FROM STOCK. SHAFT AND UNDERSIDE OF SHOULDER ARE MACHINED FOR PERFECT FIT AND SEATING.

ITEM	A	B	C	D	THREAD	WLL
	(size)					(lb)
S0314-0705	1/4"	1.50"	2.00"	0.50"	1/4"-20	500
S0314-0710	1/4"	2.50"	4.00"	0.50"	1/4"-20	500
S0314-0806	5/16"	1.50"	2.25"	0.63"	5/16"- 18	800
S0314-0810	5/16"	2.50"	4.25"	0.63"	5/16"- 18	800
S0314-1006	3/8"	1.50"	2.50"	0.75"	3/8"- 16	1,200
S0314-1012	3/8"	2.50"	4.50"	0.75"	3/8"- 16	1,200
S0314-1304	1/2"	1.25"	1.50"	1.00"	1/2"- 13	2,150
S0314-1308	1/2"	1.50"	3.25"	1.00"	1/2"- 13	2,150
S0314-1315	1/2"	3.00"	6.00"	1.00"	1/2"- 13	2,150
S0314-1603	5/8"	0.75"	1.00"	1.25"	5/8"- 11	3,440
S0314-1605	5/8"	1.75"	2.00"	1.25"	5/8"- 11	3,440
S0314-1610	5/8"	2.00"	4.00"	1.25"	5/8"- 11	3,440
S0314-1615	5/8"	3.00"	6.00"	1.25"	5/8"- 11	3,440
S0314-2003	3/4"	0.88"	1.00"	1.50"	3/4"- 10	5,140
S0314-2005	3/4"	1.75"	2.00"	1.50"	3/4"- 10	5,140
S0314-2012	3/4"	2.00"	4.50"	1.50"	3/4"- 10	5,140
S0314-2015	3/4"	3.00"	6.00"	1.50"	3/4"- 10	5,140
S0314-2213	7/8"	2.50"	5.00"	1.75"	7/8"- 9	7,130
S0314-2504	1"	1.38"	1.44"	2.00"	1"- 8	9,370
S0314-2506	1"	2.25"	2.50"	2.00"	1"- 8	9,370
S0314-2515	1"	3.00"	6.00"	2.00"	1"- 8	9,370

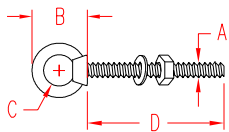
PLAIN EYE BOLT 316-NM STAINLESS STEEL



NOTE:
EYE BOLTS HAVE FORGED MARKINGS OF 316-NM, SIZE AND WLL IN TONS. ALL THREADS ARE "UNC". ONE NUT AND WASHER ARE INCLUDED. EXTRA NUTS AND WASHERS ARE AVAILABLE FROM STOCK. SHAFT IS MACHINED FOR PERFECT FIT AND SEATING.

ITEM	A	B	C	D	THREAD	WLL
	(size)					(lb)
S0315-0705	1/4"	1.50"	2.00"	0.50"	1/4"-20	500
S0315-0710	1/4"	2.50"	4.00"	0.50"	1/4"-20	500
S0315-0806	5/16"	1.50"	2.25"	0.63"	5/16"- 18	800
S0315-0810	5/16"	2.50"	4.25"	0.63"	5/16"- 18	800
S0315-1006	3/8"	1.50"	2.50"	0.75"	3/8"- 16	1,200
S0315-1012	3/8"	2.50"	4.50"	0.75"	3/8"- 16	1,200
S0315-1304	1/2"	1.25"	1.50"	1.00"	1/2"- 13	2,150
S0315-1308	1/2"	1.50"	3.25"	1.00"	1/2"- 13	2,150
S0315-1315	1/2"	3.00"	6.00"	1.00"	1/2"- 13	2,150
S0315-1603	5/8"	0.75"	1.00"	1.25"	5/8"- 11	3,440
S0315-1605	5/8"	1.75"	2.00"	1.25"	5/8"- 11	3,440
S0315-1610	5/8"	2.00"	4.00"	1.25"	5/8"- 11	3,440
S0315-1615	5/8"	3.00"	6.00"	1.25"	5/8"- 11	3,440
S0315-2003	3/4"	0.88"	1.00"	1.50"	3/4"- 10	5,140
S0315-2005	3/4"	1.75"	2.00"	1.50"	3/4"- 10	5,140
S0315-2012	3/4"	2.00"	4.50"	1.50"	3/4"- 10	5,140
S0315-2015	3/4"	3.00"	6.00"	1.50"	3/4"- 10	5,140
S0315-2213	7/8"	2.50"	5.00"	1.75"	7/8"- 9	7,130
S0315-2504	1"	1.38"	1.44"	2.00"	1"- 8	9,370
S0315-2506	1"	2.25"	2.50"	2.00"	1"- 8	9,370
S0315-2515	1"	3.00"	6.00"	2.00"	1"- 8	9,370

HEAVY DUTY SPECIAL EYE BOLT 316 STAINLESS STEEL



NOTE:
EYE BOLTS ARE FULLY THREADED WITH STANDARD "UNC" THREAD. ROD IS THREADED AND WELDED INTO PRECISION CAST EYE NUTS. ONE NUT AND WASHER ARE INCLUDED. EXTRA NUTS AND WASHERS ARE AVAILABLE FROM STOCK. FOR SPECIAL LENGTHS, SEE PAGE 71.

ITEM	A	B	C	D	WLL	WT
	(size)				(lb)	(lb)
S0319-0702	1/4"	1.20"	0.62"	2.00"	400	0.07
S0319-0712	1/4"	1.20"	0.62"	12.00"	400	0.17
S0319-0804	5/16"	1.55"	0.75"	4.00"	700	0.16
S0319-0812	5/16"	1.55"	0.75"	12.00"	700	0.29
S0319-1005	3/8"	1.92"	0.97"	5.00"	1,000	0.29
S0319-1012	3/8"	1.92"	0.97"	12.00"	1,000	0.46
S0319-1306	1/2"	2.38"	1.17"	6.00"	2,000	0.61
S0319-1312	1/2"	2.38"	1.17"	12.00"	2,000	0.87
S0319-1606	5/8"	2.81"	1.34"	6.00"	3,200	1.10
S0319-1612	5/8"	2.81"	1.34"	12.00"	3,200	1.48
S0319-2006	3/4"	3.36"	1.57"	6.00"	4,700	1.60
S0319-2012	3/4"	3.36"	1.57"	12.00"	4,700	2.20
S0319-2018	3/4"	3.36"	1.57"	18.00"	4,700	3.32
S0319-2509	1"	3.55"	2.00"	9.00"	7,000	3.78
S0319-2518	1"	3.55"	2.00"	18.00"	7,000	5.43



Key:

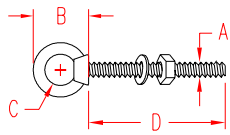


ORDERS ONLY: 800-394-2222 (USA)
877-495-5510 (CANADA)

All logos, icons, images, measurements and descriptions are the sole property of Suncor Stainless, Inc.
© 2002 Suncor Stainless, Inc.

CUSTOM EYE BOLT SET

316 STAINLESS STEEL



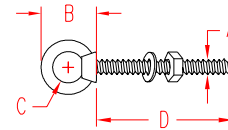
ITEM	A	B	C	D	THREAD	WLL
	(size)					(lb)
S0125-SP07	1/4"	1.20"	0.62"	CUSTOM	1/4"-20	400
S0125-SP08	5/16"	1.55"	0.75"	CUSTOM	5/16"- 18	700
S0125-SP10	3/8"	1.92"	0.97"	CUSTOM	3/8"- 16	1,000
S0125-SP13	1/2"	2.38"	1.17"	CUSTOM	1/2"- 13	2,000
S0125-SP16	5/8"	2.81"	1.34"	CUSTOM	5/8"- 11	3,200
S0125-SP20	3/4"	3.36"	1.57"	CUSTOM	3/4"- 10	4,700
S0125-SP25	1"	3.55"	2.00"	CUSTOM	1"- 8	7,500

HOW TO ORDER:
 USE ITEM NUMBERS ABOVE, ADDING THE DESIRED LENGTH (EX.) TO ORDER A 3/8" X 9-1/2", USE SP-S0125-SP10-9-1/2. THE 9-1/2" INDICATES THE SHANK LENGTH (D).

YES !!!

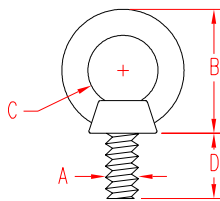
**WE CAN MAKE
 CUSTOM
 STAINLESS EYE BOLTS...
 & MANY OTHER ITEMS**

USE ITEM NUMBERS ABOVE, ADDING THE DESIRED LENGTH TO INDICATE YOUR CUSTOM SIZE
 EXAMPLE: TO ORDER A 3/8" X 9-1/2", USE SP-S0125-SP10-9-1/2. THE 9-1/2" INDICATES THE SHANK LENGTH (D).



MACHINE EYE BOLT

316 STAINLESS STEEL

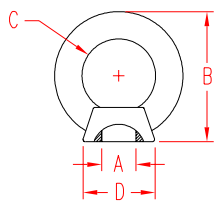


ITEM	A	B	C	D	WLL	WT
	(size)				(lb)	(lb)
S0316-0007	1/4"	1.09"	0.62"	0.53"	400	0.05
S0316-0008	5/16"	1.34"	0.75"	0.58"	700	0.07
S0316-0010	3/8"	1.68"	0.95"	0.71"	1,000	0.13
S0316-0013	1/2"	2.00"	1.14"	0.86"	2,000	0.30
S0316-0016	5/8"	2.42"	1.32"	1.02"	3,200	0.45
S0316-0020	3/4"	2.78"	1.57"	1.14"	4,700	0.79
S0316-0025	1"	3.54"	1.95"	1.31"	7,500	1.65

NOTE:
 THREADS ARE "UNC".

EYE NUT

316 STAINLESS STEEL

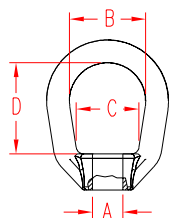


ITEM	A	B	C	D	WLL	WT
	(size)				(lb)	(lb)
S0321-0007	1/4"	1.20"	0.62"	0.50"	400	0.04
S0321-0008	5/16"	1.55"	0.75"	0.62"	700	0.08
S0321-0010	3/8"	1.92"	0.97"	0.76"	1,000	0.13
S0321-0013	1/2"	2.38"	1.17"	0.95"	2,000	0.26
S0321-0016	5/8"	2.81"	1.34"	1.19"	3,200	0.53
S0321-0020	3/4"	3.36"	1.57"	1.32"	4,700	0.75
S0321-0025	1"	4.16"	1.95"	1.70"	7,500	1.49

NOTE:
 THREADS ARE "UNC".

LIFTING EYE NUT

316-NM STAINLESS STEEL



ITEM	A	B	C	D	WLL	WT
	(size)				(lb)	(lb)
S0322-0007	1/4"	0.75"	0.59"	1.06"	460	0.08
S0322-0008	5/16"	0.75"	0.59"	1.06"	780	0.08
S0322-0010	3/8"	1.25"	1.00"	1.50"	1,160	0.26
S0322-0013	1/2"	1.25"	1.00"	1.50"	2,150	0.25
S0322-0016	5/8"	1.50"	1.19"	2.00"	3,440	0.53
S0322-0020	3/4"	1.75"	1.25"	2.37"	5,140	0.95

NOTE:
 UNDERSIDE OF SHOULDER IS MACHINED FOR PERFECT SEATING. EYE NUTS HAVE FORGED MARKINGS OF 316-NM, SIZE AND WLL IN TONS. ALL THREADS ARE "UNC".



TEL 508-732-9191 • FAX 508-732-9798 • ORDERS ONLY 800-394-2222

www.suncorstainless.com

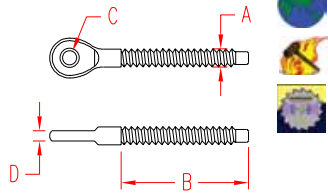
THREADED PRODUCTS

THREADED PRODUCTS

EYE END, UNF



316 STAINLESS STEEL, RIGHT HAND



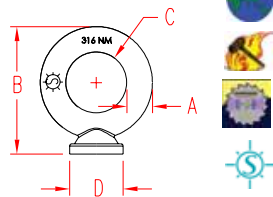
ITEM	A	B	C	D	WLL	WT
	(size)				(lb)	(lb)
S0318-0007	1/4"	1.86"	0.26"	0.16"	500	0.04
S0318-0009	5/16"	2.26"	0.34"	0.16"	900	0.07
S0318-0010	3/8"	2.50"	0.41"	0.22"	1,400	0.11
S0318-0013	1/2"	3.14"	0.51"	0.32"	2,300	0.22
S0318-0016	5/8"	4.00"	0.57"	0.38"	3,500	0.45

NOTE:
ALL THREADS ARE STANDARD "UNF".
EYE IS FORGED AND MACHINED.

PAD EYE



316-NM STAINLESS STEEL



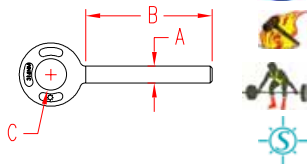
ITEM	A	B	C	D	WT
	(size)				(lb)
S0324-0005	3/16"	1.06"	0.50"	0.38"	0.04
S0324-0007	1/4"	1.31"	0.63"	0.56"	0.06
S0324-0008	5/16"	1.56"	0.75"	0.63"	0.10
S0324-0010	3/8"	2.00"	1.00"	0.87"	0.19
S0324-0013	1/2"	2.50"	1.25"	1.00"	0.38
S0324-0016	5/8"	3.25"	1.50"	1.38"	0.87
S0324-0020	3/4"	4.75"	1.75"	1.50"	1.52

NOTE:
WLL IS DEPENDENT ON QUALITY OF THE WELDING AND ATTACHED STRUCTURE PAD EYES HAVE FORGED MARKINGS OF 316-NM, AND SIZE. UNDERSIDE IS MACHINED FOR PERFECT SEATING.

PLAIN EYE RIVET



316-NM STAINLESS STEEL



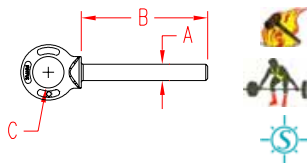
ITEM	A	B	C	WT
	(size)			(lb)
S0315-R1304	1/2"	1.50"	1.00"	0.26
S0315-R1308	1/2"	3.25"	1.00"	0.37

NOTE:
OTHER SIZES ARE AVAILABLE ON SPECIAL ORDER. SEE PLAIN EYE BOLTS FOR SPECIAL SIZES (PAGE 70).
EYE RIVETS HAVE FORGED MARKINGS OF 316-NM, SIZE AND WLL IN TONS. SHAFT IS MACHINED FOR PERFECT FIT.

SHOULDER EYE RIVET



316-NM STAINLESS STEEL



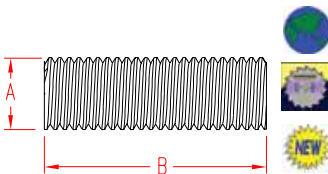
ITEM	A	B	C	WT
	(size)			(lb)
S0314-R1304	1/2"	1.50"	1.00"	0.27
S0314-R1308	1/2"	3.25"	1.00"	0.38

NOTE:
OTHER SIZES ARE AVAILABLE ON SPECIAL ORDER. SEE SHOULDER EYE BOLTS FOR SPECIAL SPECS (PAGE 62).
EYE RIVETS HAVE FORGED MARKINGS OF 316-NM, SIZE AND WLL IN TONS. UNDERSIDE OF SHOULDER AND SHAFT ARE MACHINED FOR PERFECT SEATING AND FIT.

THREADED ROD, UNC



316 STAINLESS STEEL



ITEM	A	B	THREAD	WLL	WT
	(size)			(lb)	(lb)
S0300-0007	1/4"	6 FEET	1/4"-20	475	0.76
S0300-0008	5/16"	6 FEET	5/16"-18	780	1.22
S0300-0010	3/8"	6 FEET	3/8"-16	1,160	2.30
S0300-0013	1/2"	6 FEET	1/2"-13	2,120	3.25
S0300-0016	5/8"	6 FEET	5/8"-11	3,390	5.15
S0300-0020	3/4"	6 FEET	3/4"-10	5,000	7.55
S0300-0022	7/8"	6 FEET	7/8"-9	6,930	10.26
S0300-0025	1"	6 FEET	1"-8	9,090	13.64

NOTE:
RODS WITH METRIC THREAD CAN BE SUPPLIED ON SPECIAL ORDER.



Key:



Made in USA



Drop Forged



Precision Machined



Wire Formed



Suncor Exclusive



Import



Precision Cast



Stamped



Load Rated



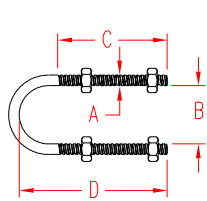
New Product

ORDERS ONLY: 800-394-2222 (USA)
877-495-5510 (CANADA)

All logos, icons, images, measurements and descriptions are the sole property of Suncor Stainless, Inc. © 2002 Suncor Stainless, Inc.

LONG U-BOLT

304 STAINLESS STEEL

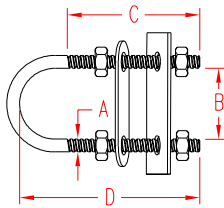


ITEM	A	THREAD	B	C	D	PIPE	WLL
	(size)						(lb)
S0352-07013	1/4"	1/4" - 20	0.88"	2.50"	2.94"	1/2"	435
S0352-07020	1/4"	1/4" - 20	1.13"	2.50"	3.19"	3/4"	435
S0352-07025	1/4"	1/4" - 20	1.38"	2.50"	3.44"	1"	435
S0352-10032	3/8"	3/8" - 16	1.69"	2.38"	3.72"	1-1/4"	1,090
S0352-10038	3/8"	3/8" - 16	2.00"	2.50"	4.00"	1-1/2"	1,090
S0352-10050	3/8"	3/8" - 16	2.44"	2.50"	4.44"	2"	1,090
S0352-13065	1/2"	1/2" - 13	2.94"	3.00"	5.22"	2-1/2"	2,020
S0352-13075	1/2"	1/2" - 13	3.56"	3.00"	5.75"	3"	2,020
S0352-13090	1/2"	1/2" - 13	4.06"	3.00"	6.25"	3-1/2"	2,020
S0352-13100	1/2"	1/2" - 13	4.56"	3.00"	6.75"	4"	2,020
S0352-13125	1/2"	1/2" - 13	5.63"	3.00"	7.81"	5"	2,020
S0352-16150	5/8"	5/8" - 11	6.75"	3.75"	9.69"	6"	3,230
S0352-16200	5/8"	5/8" - 11	8.75"	3.75"	11.50"	8"	3,230
S0352-20250	3/4"	3/4" - 10	10.88"	4.00"	13.88"	10"	4,830
S0352-22300	7/8"	7/8" - 9	12.88"	4.25"	16.13"	12"	6,730
S0352-22350	7/8"	7/8" - 9	14.13"	4.25"	17.50"	14"	6,730
S0352-22400	7/8"	7/8" - 9	16.13"	4.25"	19.25"	16"	6,730

NOTE:
EACH U-BOLT SET INCLUDES 4 NUTS,
WASHERS ARE AVAILABLE SEPERATELY.

BOW / STERN EYE

304 STAINLESS STEEL

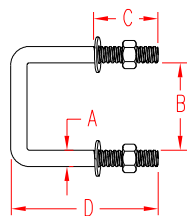


ITEM	A	THREAD	B	C	D	PULL	WT
	(size)					(strength - lb)	(lb)
S0353-10055	3/8"	3/8" - 16	1.03"	1.13"	2.25"	3,200	0.25
S0353-10090	3/8"	3/8" - 16	1.03"	3.00"	4.00"	3,200	0.30
S0353-10115	3/8"	3/8" - 16	1.03"	4.00"	5.00"	3,200	0.40
S0353-11120	7/16"	7/16" - 14	1.50"	3.44"	5.00"	3,800	0.60
S0353-11150	7/16"	7/16" - 14	1.50"	4.50"	6.00"	3,800	0.65
S0353-13095	1/2"	1/2" - 13	1.31"	2.50"	3.87"	4,800	0.60
S0353-13120	1/2"	1/2" - 13	1.31"	3.44"	4.85"	4,800	0.70
S0353-13150	1/2"	1/2" - 13	1.31"	4.75"	6.00"	4,800	0.80
S0353-13180	1/2"	1/2" - 13	1.31"	6.00"	7.25"	4,800	0.95

NOTE:
EACH U-BOLT SET INCLUDES 4 NUTS (2 STANDARD AND 2 BEVELLED),
1 BOW PLATE AND 1 STERN PLATE. THREADS ARE "UNC".

SQUARE U-BOLT

304 STAINLESS STEEL

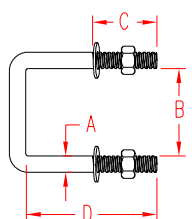


ITEM	A	THREAD	B	C	D	WLL	WT
	(size)					(lb)	(lb)
S0356-102X3	3/8"	3/8" - 16	2.00"	1.50"	3.40"	1,090	0.25
S0356-102X5	3/8"	3/8" - 16	2.00"	3.00"	5.40"	1,090	0.35
S0356-102X7	3/8"	3/8" - 16	2.00"	3.75"	7.37"	1,090	0.45
S0356-104X3	3/8"	3/8" - 16	4.00"	1.50"	3.37"	1,090	0.30
S0356-104X5	3/8"	3/8" - 16	4.00"	3.00"	5.37"	1,090	0.40
S0356-104X7	3/8"	3/8" - 16	4.00"	3.75"	7.37"	1,090	0.50
S0356-106X5	3/8"	3/8" - 16	6.00"	3.00"	5.30"	1,090	0.45
S0356-106X7	3/8"	3/8" - 16	6.00"	3.75"	7.37"	1,090	0.55
S0356-106X9	3/8"	3/8" - 16	6.00"	5.63"	9.37"	1,090	0.65

NOTE:
EACH SET INCLUDES 2 NUTS AND 2 WASHERS.
THREADS ARE "UNC" 3/8"-16.

TRAILER U-BOLT

304 STAINLESS STEEL



ITEM	A	THREAD	B	C	D	WLL	WT
	(size)					(lb)	(lb)
S0276-102X4	1/2"	1/2" - 13	2.13"	1.50"	4.50"	2,020	0.68
S0276-103X3	1/2"	1/2" - 13	3.13"	1.50"	3.50"	2,020	0.65
S0276-103X4	1/2"	1/2" - 13	3.13"	1.50"	4.50"	2,020	0.70
S0276-103X5	1/2"	1/2" - 13	3.13"	1.50"	5.50"	2,020	0.75
S0276-103X6	1/2"	1/2" - 13	3.13"	1.50"	6.50"	2,020	0.80
S0276-104X3	1/2"	1/2" - 13	4.13"	1.50"	3.50"	2,020	0.70

NOTE:
STAINLESS TRAILER U-BOLTS ARE INTENDED TO REPLACE OR
UPGRADE ORIGINAL TRAILER PARTS. EACH SET INCLUDES 2 NUTS
AND 2 WASHERS.

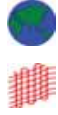
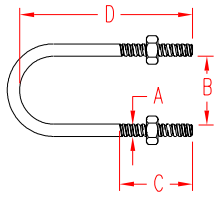


TEL 508-732-9191 • FAX 508-732-9798 • ORDERS ONLY 800-394-2222

www.suncorstainless.com

THREADED PRODUCTS

U-BOLT STANDARD 304 STAINLESS STEEL



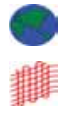
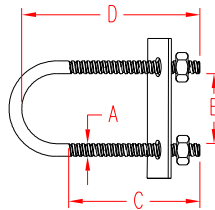
**BULK QUANTITY OF CUSTOM SIZES
MAY BE SPECIAL ORDERED.**

**CALL OR SEND US
YOUR REQUIREMENTS FOR A PRICE
AND DELIVERY SCHEDULE.**

ITEM	A	THREAD	B	C	D	PIPE	WLL
	(size)						(lb)
S0350-07010	1/4"	1/4" - 20	0.75"	0.63"	1.25"	3/8"	435
S0350-07013	1/4"	1/4" - 20	1.00"	1.00"	1.75"	1/2"	435
S0350-07020	1/4"	1/4" - 20	1.13"	1.00"	2.00"	3/4"	435
S0350-07025	1/4"	1/4" - 20	1.50"	1.38"	2.75"	1"	435
S0350-07032	1/4"	1/4" - 20	1.75"	1.38"	3.00"	1-1/4"	435
S0350-07038	1/4"	1/4" - 20	2.00"	1.38"	3.25"	1-1/2"	435
S0350-08013	5/16"	5/16" - 18	1.00"	1.38"	2.19"	1/2"	610
S0350-08026	5/16"	5/16" - 18	1.50"	1.00"	2.19"	1"	610
S0350-08032	5/16"	5/16" - 18	1.75"	1.13"	2.69"	1-1/4"	610
S0350-08038	5/16"	5/16" - 18	2.00"	1.00"	2.69"	1-1/2"	610
S0350-08050	5/16"	5/16" - 18	2.50"	1.00"	3.19"	2"	610
S0350-08065	5/16"	5/16" - 18	3.00"	1.00"	3.69"	2-1/2"	610
S0350-10013	3/8"	3/8" - 16	1.00"	1.25"	2.25"	1/2"	1,090
S0350-10020	3/8"	3/8" - 16	1.25"	1.25"	2.25"	3/4"	1,090
S0350-10025	3/8"	3/8" - 16	1.50"	1.25"	2.50"	1"	1,090
S0350-10032	3/8"	3/8" - 16	1.75"	1.25"	2.75"	1-1/4"	1,090
S0350-10038	3/8"	3/8" - 16	2.00"	1.25"	2.63"	1-1/2"	1,090
S0350-10050	3/8"	3/8" - 16	2.50"	1.25"	3.13"	2"	1,090
S0350-10065	3/8"	3/8" - 16	3.00"	1.25"	3.63"	2-1/2"	1,090
S0350-10075	3/8"	3/8" - 16	3.50"	1.25"	4.13"	3"	1,090
S0350-13065	1/2"	1/2" - 13	3.00"	1.63"	4.50"	2-1/2"	2,020
S0350-13075	1/2"	1/2" - 13	3.50"	1.50"	5.00"	3"	2,020
S0350-13090	1/2"	1/2" - 13	4.00"	1.50"	5.50"	3-1/2"	2,020
S0350-13100	1/2"	1/2" - 13	4.50"	1.50"	6.00"	4"	2,020
S0350-13125	1/2"	1/2" - 13	5.63"	2.00"	7.25"	5"	2,020
S0350-13150	1/2"	1/2" - 13	6.75"	2.00"	8.38"	6"	2,020
S0350-13200	1/2"	1/2" - 13	8.75"	2.00"	10.38"	8"	2,020

**NOTE:
ALL THREADS ARE UNC AND SET INCLUDES 2 NUTS.
EXTRA NUTS AND WASHERS ARE AVAILABLE FROM STOCK.**

U-BOLT WITH PLATE 304 STAINLESS STEEL



**BULK QUANTITY OF CUSTOM SIZES
MAY BE SPECIAL ORDERED.**

**CALL OR SEND US
YOUR REQUIREMENTS FOR A PRICE
AND DELIVERY SCHEDULE.**

ITEM	A	THREAD	B	C	D	PIPE	WLL
	(size)						(lb)
S0351-07010	1/4"	1/4" - 20	0.75"	0.63"	1.25"	3/8"	435
S0351-07013	1/4"	1/4" - 20	1.00"	1.00"	1.75"	1/2"	435
S0351-07020	1/4"	1/4" - 20	1.13"	1.00"	2.00"	3/4"	435
S0351-07025	1/4"	1/4" - 20	1.50"	1.38"	2.75"	1"	435
S0351-07032	1/4"	1/4" - 20	1.75"	1.38"	3.00"	1-1/4"	435
S0351-07038	1/4"	1/4" - 20	2.00"	1.38"	3.25"	1-1/2"	435
S0351-08013	5/16"	5/16" - 18	1.00"	1.38"	2.19"	1/2"	610
S0351-08026	5/16"	5/16" - 18	1.50"	1.00"	2.19"	1"	610
S0351-08032	5/16"	5/16" - 18	1.75"	1.13"	2.69"	1-1/4"	610
S0351-08038	5/16"	5/16" - 18	2.00"	1.00"	2.69"	1-1/2"	610
S0351-08050	5/16"	5/16" - 18	2.50"	1.00"	3.19"	2"	610
S0351-08065	5/16"	5/16" - 18	3.00"	1.00"	3.69"	2-1/2"	610
S0351-10013	3/8"	3/8" - 16	1.00"	1.25"	2.25"	1/2"	1,090
S0351-10020	3/8"	3/8" - 16	1.25"	1.25"	2.25"	3/4"	1,090
S0351-10025	3/8"	3/8" - 16	1.50"	1.25"	2.50"	1"	1,090
S0351-10032	3/8"	3/8" - 16	1.75"	1.25"	2.75"	1-1/4"	1,090
S0351-10038	3/8"	3/8" - 16	2.00"	1.25"	2.63"	1-1/2"	1,090
S0351-10050	3/8"	3/8" - 16	2.50"	1.25"	3.13"	2"	1,090
S0351-10065	3/8"	3/8" - 16	3.00"	1.25"	3.63"	2-1/2"	1,090
S0351-10075	3/8"	3/8" - 16	3.50"	1.25"	4.13"	3"	1,090
S0351-13065	1/2"	1/2" - 13	3.00"	1.63"	4.50"	2-1/2"	2,020
S0351-13075	1/2"	1/2" - 13	3.50"	1.50"	5.00"	3"	2,020
S0351-13090	1/2"	1/2" - 13	4.00"	1.50"	5.50"	3-1/2"	2,020
S0351-13100	1/2"	1/2" - 13	4.50"	1.50"	6.00"	4"	2,020
S0351-13125	1/2"	1/2" - 13	5.63"	2.00"	7.25"	5"	2,020
S0351-13150	1/2"	1/2" - 13	6.75"	2.00"	8.38"	6"	2,020
S0351-13200	1/2"	1/2" - 13	8.75"	2.00"	10.38"	8"	2,020

**NOTE:
ALL THREADS ARE UNC AND SET INCLUDES PLATE AND 2 NUTS.
EXTRA NUTS AND WASHERS ARE AVAILABLE FROM STOCK.**



Key:



Made in USA

Import



Drop Forged

Precision Cast



Precision Machined

Stamped



Wire Formed

Load Rated



Suncor Exclusive

New Product

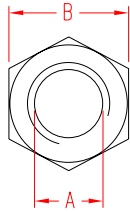
**ORDERS ONLY: 800-394-2222 (USA)
877-495-5510 (CANADA)**

All logos, icons, images, measurements and descriptions are the sole property of Suncor Stainless, Inc. © 2002 Suncor Stainless, Inc.

LEFT HAND TURNBUCKLE NUT



316 STAINLESS STEEL
UNC

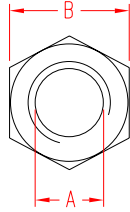


ITEM	A (size)	B (wrench)	THREAD	WT (lb)
S0302-0005	3/16"	0.31" 5/16"	10 - 24	.25/100
S0302-0007	1/4"	0.39" 3/8"	1/4" - 20	.42/100
S0302-0008	5/16"	0.47" 1/2"	5/16" - 18	.82/100
S0302-0010	3/8"	0.54" 9/16"	3/8" - 16	1.5/100
S0302-0013	1/2"	0.75" 3/4"	1/2" - 13	3.5/100
S0302-0016	5/8"	0.94" 15/16"	5/8" - 11	7.0/100
S0302-0020	3/4"	1.13" 1-1/8"	3/4" - 10	13.0/100
S0302-0025	1"	1.51" 1-1/2"	1" - 8	31.0/100
S0302-0028	1-1/8"	1.65" 1-5/8"	1-1/8" - 7	40.0/100
S0302-0032	1-1/4"	1.77" 1-3/4"	1-1/4" - 7	58.0/100

RIGHT HAND TURNBUCKLE NUT



316 STAINLESS STEEL
UNC

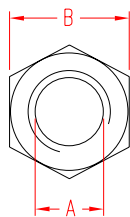


ITEM	A (size)	B (wrench)	THREAD	WT (lb)
S0303-0005	3/16"	0.31" 5/16"	10 - 24	.25/100
S0303-0007	1/4"	0.44" 7/16"	1/4" - 20	.42/100
S0303-0008	5/16"	0.47" 1/2"	5/16" - 18	.82/100
S0303-0010	3/8"	0.54" 9/16"	3/8" - 16	1.5/100
S0303-0013	1/2"	0.75" 3/4"	1/2" - 13	3.5/100
S0303-0016	5/8"	0.94" 15/16"	5/8" - 11	7.0/100
S0303-0020	3/4"	1.13" 1-1/8"	3/4" - 10	13.0/100
S0303-0025	1"	1.51" 1-1/2"	1" - 8	31.0/100
S0303-0028	1-1/8"	1.65" 1-5/8"	1-1/8" - 7	40.0/100
S0303-0032	1-1/4"	1.77" 1-3/4"	1-1/4" - 7	58.0/100

RIGHT HAND METRIC NUT



316 STAINLESS STEEL

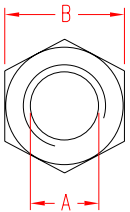


ITEM	A (size)	B (wrench)	THREAD	WT (lb)
S0303-MM05	5 mm	0.31" 5/16"	M5 x 0.8	.25/100
S0303-MM06	6 mm	0.38" 3/8"	M6 x 1.0	.45/100
S0303-MM10	10 mm	0.65" 5/8"	M10 x 1.5	2.0/100
S0303-MM12	12 mm	0.74" 3/4"	M12 x 1.75	3.5/100
S0303-MM16	16 mm	0.93" 15/16"	M16 x 2.0	8.0/100
S0303-MM20	20 mm	1.17" 1-3/16"	M20 x 2.5	12.0/100

LEFT HAND TURNBUCKLE NUT



316 STAINLESS STEEL
UNF



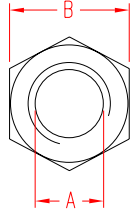
ITEM	A (size)	B (wrench)	THREAD	WT (lb)
S0304-0005	3/16"	0.31" 5/16"	10 - 32	.25/100
S0304-0007	1/4"	0.39" 3/8"	1/4" - 28	.42/100
S0304-0008	5/16"	0.47" 1/2"	5/16" - 24	.82/100
S0304-0010	3/8"	0.54" 9/16"	3/8" - 24	1.5/100
S0304-0013	1/2"	0.75" 3/4"	1/2" - 20	3.5/100
S0304-0016	5/8"	0.94" 15/16"	5/8" - 18	7.0/100
S0304-0020	3/4"	1.09" 1-1/8"	3/4" - 16	10.0/100

NOTE:
ALL THREADS ARE STANDARD LEFT HAND "UNF".

RIGHT HAND TURNBUCKLE NUT



316 STAINLESS STEEL
UNF



ITEM	A (size)	B (wrench)	THREAD	WT (lb)
S0305-0005	3/16"	0.31" 5/16"	10 - 32	.25/100
S0305-0007	1/4"	0.44" 7/16"	1/4" - 28	.42/100
S0305-0008	5/16"	0.47" 1/2"	5/16" - 24	.82/100
S0305-0010	3/8"	0.54" 9/16"	3/8" - 24	1.5/100
S0305-0013	1/2"	0.75" 3/4"	1/2" - 20	3.5/100
S0305-0016	5/8"	0.94" 15/16"	5/8" - 18	7.0/100
S0305-0020	3/4"	1.09" 1-1/8"	3/4" - 16	10.0/100

NOTE:
ALL THREADS ARE STANDARD RIGHT HAND "UNF".



TEL 508-732-9191 • FAX 508-732-9798 • ORDERS ONLY 800-394-2222

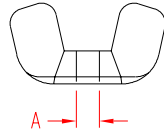
www.suncorstainless.com

THREADED PRODUCTS

THREADED PRODUCTS

WING NUT

304 STAINLESS STEEL

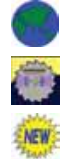
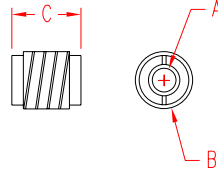


ITEM	A	THREAD	WT
	(size)		(lb)
S0301-0005	3/16"	10 - 24	0.01
S0301-0007	1/4"	1/4" - 20	0.02
S0301-0008	5/16"	5/16" - 18	0.04
S0301-0010	3/8"	3/8" - 16	0.08
S0301-0013	1/2"	1/2" - 13	0.13
S0301-0016	5/8"	5/8" - 11	0.20

NOTE:
HEAVY DUTY, PRECISION CAST WING NUT.
ALL THREADS ARE STANDARD "UNC".

THREAD INSERT, UNC

316 STAINLESS STEEL

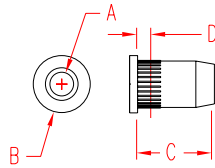


ITEM	A	B	C	HOLE SIZE	WT
	(size)				(lb)
S0385-0005	3/16"	0.46"	0.50"	3/8"	0.01
S0385-0007	1/4"	0.46"	0.50"	3/8"	0.01
S0385-0008	5/16"	0.60"	0.63"	1/2"	0.02
S0385-0010	3/8"	0.60"	0.63"	1/2"	0.03

NOTE:
SPECIAL FITTING WITH "KNIFE THREADS" ON THE OUTSIDE AND STANDARD UNC ON THE INSIDE. USED TO CONNECT HORIZONTAL WIRE ROPE TO WOODEN POSTS AND TO ATTACH OTHER FASTENERS TO WOOD, PLASTIC OR CARBON FIBER.

RIVET NUT INSERT

316 STAINLESS STEEL

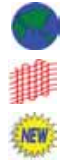
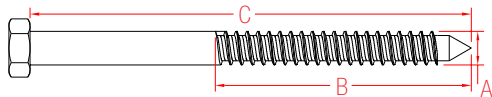


ITEM	A	B	C	D	THREAD	WT
				(max grip)		(lb)
UNF, RIGHT AND LEFT						
S0381-0007	1/4"	0.43"	0.63"	0.14"	1/4" x 28 RH	0.01
S0381-L007	1/4"	0.43"	0.63"	0.14"	1/4" x 28 LH	0.01
UNC, RIGHT AND LEFT						
S0382-0005	3/16"	0.35"	0.52"	0.12"	10 x 24 RH	0.01
S0382-0007	1/4"	0.43"	0.63"	0.14"	1/4" x 20 RH	0.01
S0382-L007	1/4"	0.43"	0.63"	0.14"	1/4" x 20 LH	0.01
S0382-0008	5/16"	0.55"	0.70"	0.16"	5/16" x 18 RH	0.01
S0382-0010	3/8"	0.63"	0.90"	0.22"	3/8" x 16 RH	0.02

NOTE:
FOR INSTALLATION IN THIN WALL METAL PLATES OR TUBES. RIVET NUT INSTALLATION TOOL IS ITEM #S0380-0000 (PG.41).

LAG SCREW

304 STAINLESS STEEL

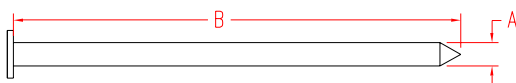


ITEM	A	B	C	WT
	(size)		(length)	(lb)
S0335-07150	1/4"	3.75"	6"	0.11
S0335-07250	1/4"	5.75"	10"	0.18
S0335-10150	3/8"	3.75"	6"	0.16
S0335-10250	3/8"	5.75"	10"	0.26
S0335-13150	1/2"	3.75"	6"	0.21
S0335-13250	1/2"	5.75"	10"	0.35
S0335-16300	5/8"	6.50"	12"	0.53

NOTE:
EXTREMELY CORROSION RESISTANT. WITH SHARP POINTS AND COARSE THREADS, THESE LAG SCREWS ARE DESIGNED TO PENETRATE AND GRIP WOOD. CAN BE USED IN DOCK AND PIER CONSTRUCTION. PILOT HOLE RECOMMENDED.

STAINLESS SPIKE

304 STAINLESS STEEL



ITEM	A	B	WT
	(size)	(length)	(lb)
S0340-1006	3/8"	6.00"	0.19
S0340-1008	3/8"	8.00"	0.26
S0340-1010	3/8"	10.00"	0.32
S0340-1012	3/8"	12.00"	0.38

NOTE:
THESE HEAVY DUTY NAILS ARE GREAT FOR DOCK & PIER CONSTRUCTION. CORROSION RESISTANT FOR LONG LASTING STRENGTH.



Key:



ORDERS ONLY: 800-394-2222 (USA)
 877-495-5510 (CANADA)

All logos, icons, images, measurements and descriptions are the sole property of Suncor Stainless, Inc.
 © 2002 Suncor Stainless, Inc.